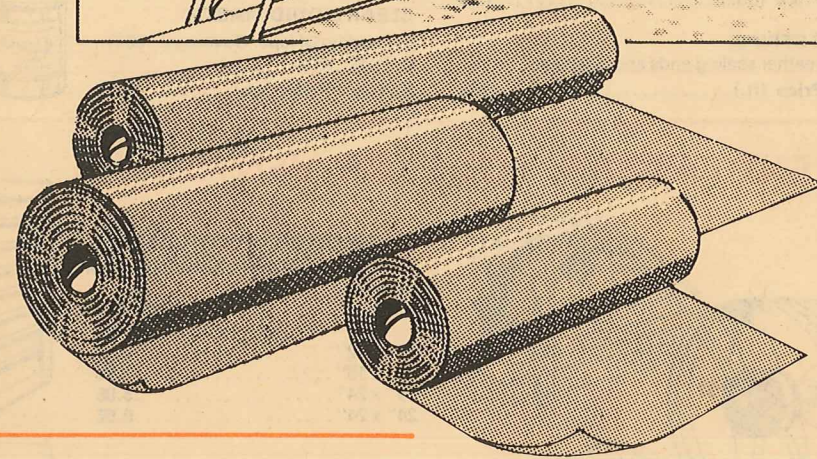
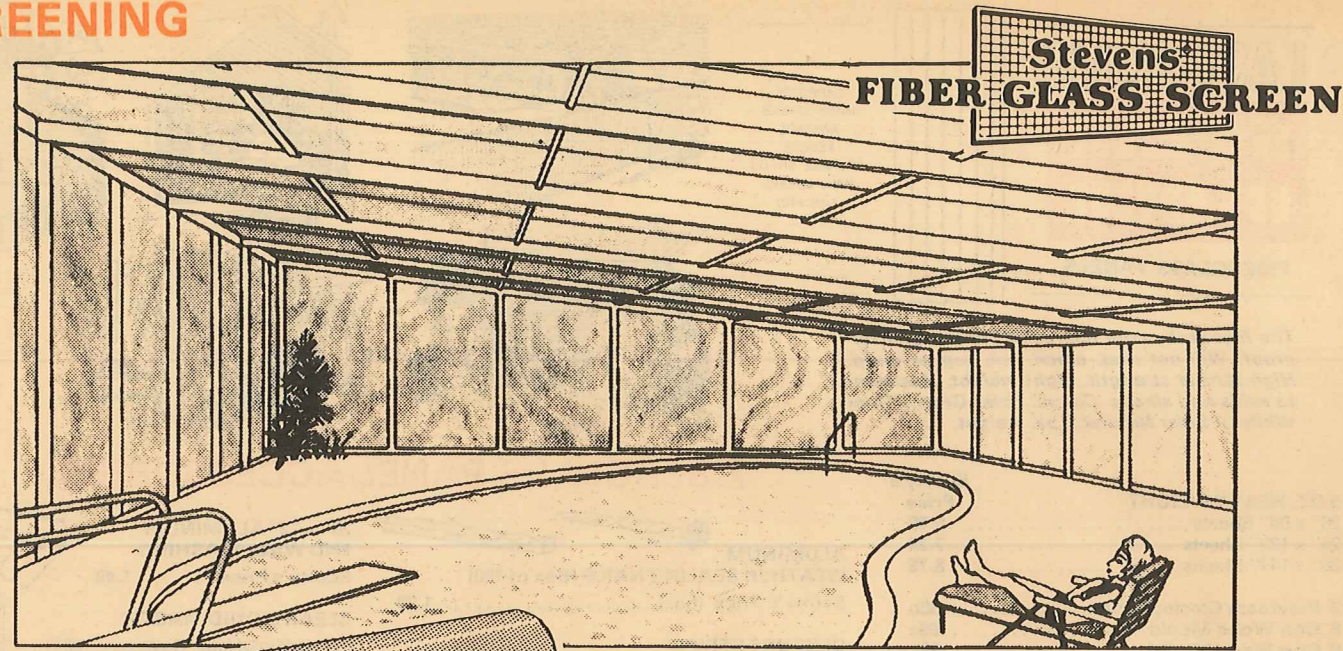


## SCREENING



Stevens  
FIBER GLASS SCREEN

### STEVENS AQUA FIBERGLASS SCREENING (18 x 14 mesh - 100 lin. ft. rolls)

Cut Price Per Lineal Foot (Not in all stores)	Approx. Price	Full Roll Price
36" (300 sq. ft.)	48c	43.80
48" (400 sq. ft.)	64c	58.40
60" (500 sq. ft.)	80c	72.95
72" (600 sq. ft.)	96c	87.60
84" (700 sq. ft.)	1.12	99.95

Scotty's  
Price

### STEVENS GRAY FIBERGLASS SCREENING (18 x 16 mesh - 100 lin. ft. rolls)

Cut Price Per Lineal Foot (Not in all stores)	Approx. Price	Full Roll Price
24" (200 sq. ft.)	21c	19.40
30" (250 sq. ft.)	27c	24.25
36" (300 sq. ft.)	31c	28.95
48" (400 sq. ft.)	42c	38.80
60" (500 sq. ft.)	53c	48.50
72" (600 sq. ft.)	79c	72.70
84" (700 sq. ft.)	92c	84.85

Scotty's  
Price

## SCREEN ACCESSORIES

**THERMWELL**  
PRODUCTS CO., INC.



### VINYL TUBULAR SCREEN SPLINE

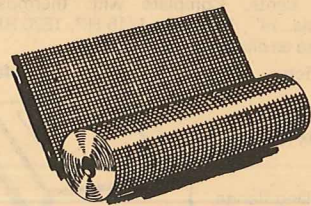
25' long for installing aluminum and fiberglass screening in aluminum frames.

Price	Scotty's Price
S532/25	99c
S964/25	99c
S1164/25	99c
S125/25	99c

### SPLINE TOOL - Screen Installation Tool

ST1WST2 ..... 1.98

## SCREEN WIRE



**ALUMINUM WIRE SCREENING** (100 ft. rolls)  
Meets today's demands for highest quality, durable aluminum screening. Can't rust, resists corrosion — even in salt air. Uniform in texture, always lies flat, easy to apply. Approx. weight per 100 sq. ft. - 6 1/4 lbs. Mesh size: 18 x 16.

Cut Price Per Lineal Foot (Not in all stores)	Approx. Price	Full Roll Price
24" (200 sq. ft.)	25c	21.65
28" (233 sq. ft.)	29c	25.25
30" (250 sq. ft.)	31c	27.10
32" (267 sq. ft.)	33c	28.95
36" (300 sq. ft.)	37c	32.50
48" (400 sq. ft.)	48c	43.35

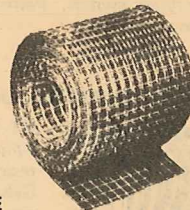
Scotty's  
Price

### HANDI-ROLL SCREEN WIRE

Rolls of 6' and 25' aluminum and fiberglass screen wire in all popular widths.

Check your Scotty's store for current low prices.

## VENT WIRE



### ALUMINUM VENT WIRE

100 lin. ft. rolls	Scotty's Price
8 x 8 Mesh	5.45
6" .....	7.25
8" .....	7.25
18 x 16 Mesh	5.45
6" .....	7.25
8" .....	7.25

Scotty's  
Price

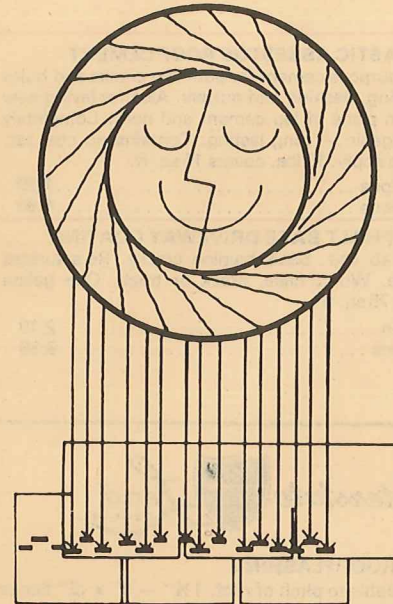
### STEVENS GRAY FIBERGLASS VENT WIRE

18 x 14 Mesh - 100 lin. ft. rolls	Price
6" .....	4.50
8" .....	5.99

gaf

SELF-  
SEALING® No. 240

## ASPHALT SHINGLES



### SEALED DOWN BY THE SUN AGAINST WIND AND WEATHER

Now you can protect your roof against costly wind damage and save on installation cost. With GAF Self-Sealing asphalt shingles, there is no costly cementing down of shingles. The sun does all the work free! GAF's special sealing agent — activated by the sun — joins the shingles together so that the exposed edge of each shingle forms a solid bond with the shingle beneath it. Available in many Trend Colors selected by one of the country's leading color consultants. Trend Colors are chosen for distinctive beauty, for harmony with present sidewall and trim colors.

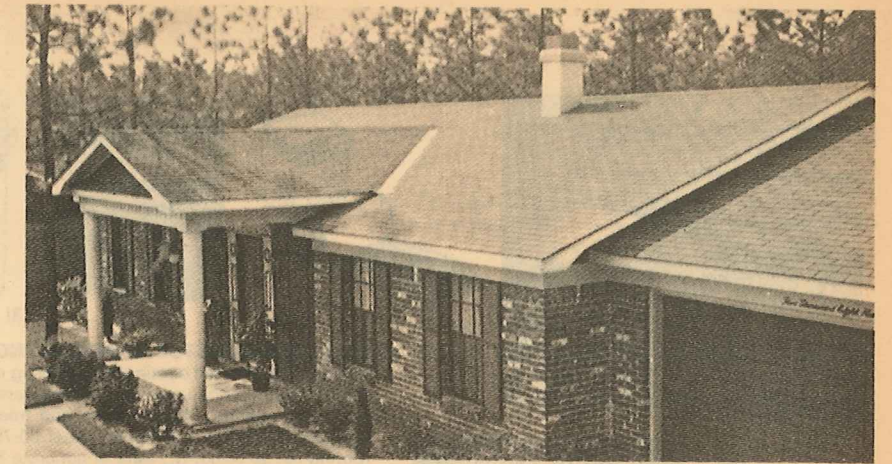
White, Pastel Green, Charcoal Blend, Pastel Coral, Pastel Grey, Evergreen, Honey Beige, Harvest Red, Bahama Brown, Spanish Green.

Check your Scotty's store for current low prices.

**Class "C" No. 240 Self-Sealing Fungus Resistant Shingles.** The roofing that fights fungus and mildew shadows. Stays white for years.

10-Year Warranty against fungus discoloration — by GAF, one of America's leading manufacturers of building materials.

Prices slightly higher than standard self-sealing shingles.



## GAF® Sentinel™ SELF-SEALING CLASS "A" FIBERGLASS ASPHALT SHINGLES

Self-sealing Class A fire-rated fiberglass asphalt shingles will give your home maximum protection against fire, wind and weather. Available in Black, White, Bahama Brown, Cypress Tan and Pastel Green. Check your Scotty's store for current low prices.

## gaf ROLL ROOFING

### SMOOTH-SURFACED

The original and still the best of smooth surfaced roll roofings. It comes in rolls containing 108 sq. ft. Each roll is 36 in. wide and 36 ft. long. Sufficient to cover 100 sq. ft. of roof area, including the laps.

Extra Heavy (65 lbs.) ..... 6.99

### DUBL-COVERAGE

Handsome, double-thick protection for roofs with slopes of 2" per foot or more. Rolls are 36" wide and have 17" surface coated with mineral granules and 19" selvage factory coated with heavy bitumen. Weight 60 lbs., coverage 50 sq. ft. roof surface. White and Evergreen.

### MINERALIZED — 90 lb.

Strong roofing felt saturated and coated with the best grade of asphalt, finished with minerals that are dependable for protection and appearance. Coated on under side. Stocked in White, Harvest Red, Pastel Green and Evergreen.

### ASPHALT FELT

Use under square-tab asphalt shingles and in the construction of built-up roofs, under asbestos siding, and many other uses. Carries Underwriter's B/U Label.

15 lb. 432 sq. ft.  
30 lb. 216 sq. ft.

## gaf ASPHALT



Use on construction of built-up roofs. Melting point: 185 to 200 degrees.

Available in: 100 lb. Drum Steep, 100 lb. Dead Level and 150 lb. Dead Level.

(Not stocked in all stores)

