

# WOOD LADDERS

FLORIDA LADDER CO



[1] HANDEE STEP STOOL - 24" High  
Scotty's Price ..... 3.59

[2] HOUSEHOLD STEP LADDER  
Rugged beam back construction for rigidity and strength. Beams and corrugated steps are reinforced with steel rods. Front edges of steps are flush with rail to give full support where load is heaviest.

SPECIFICATIONS	
Front Rails	25/32" x 2 5/8"
Back Legs	25/32" x 1 3/4"
Steps	25/32" x 3 1/2"
Size	Scotty's Price
4'	8.85
5'	10.95
6'	13.65
7'	15.49
8'	18.55

[3] HEAVY DUTY MECHANIC  
Constructed for heavy duty from selected Hemlock or Western Fir. Dowel back construction for extra strength. Fully rodded and trussed. Heavy plated hardware.

SPECIFICATIONS	
Front Rails	25/32" x 3 1/4"
Back Legs	25/32" x 2 5/8"
Steps	25/32" x 3 1/2"
Size	Scotty's Price
6'	24.59
8'	35.95

[4] SINGLE LADDER  
Made of selected Western Fir or Hemlock for heavy duty and industrial work. Size 12'.

SPECIFICATIONS	
Rails	1 3/8" x 2 3/4"
Rungs	1 5/32"
Scotty's Price	30.79

[5] STANDARD EXTENSION LADDER  
For general usage and light industrial work. Selected Western Fir or Hemlock. Dried Hickory rungs. Locks stamped from heavy gauge steel with reinforced bead for extra strength. Freely operating, yet positively locking section at desired height.

SPECIFICATIONS	
Rails	1 3/8" x 2 3/4"
Rungs	1 5/32"
16' - Two 8' Sections (13' extended)	43.39*
20' - Two 10' Sections (17' extended)	57.49*
28' - Two 14' Sections (25' extended)	85.49*

[6] SUPERIOR EXTENSION LADDER  
Made of selected Western Fir or Hemlock for heavy duty and industrial work. Plated heavy gauge guide iron with steel automatic locks. With rope and pulley.

SPECIFICATIONS	
Rails	1 3/8" x 2 3/4"
Rungs	1 5/32"
24'	73.89*
32'	98.29*

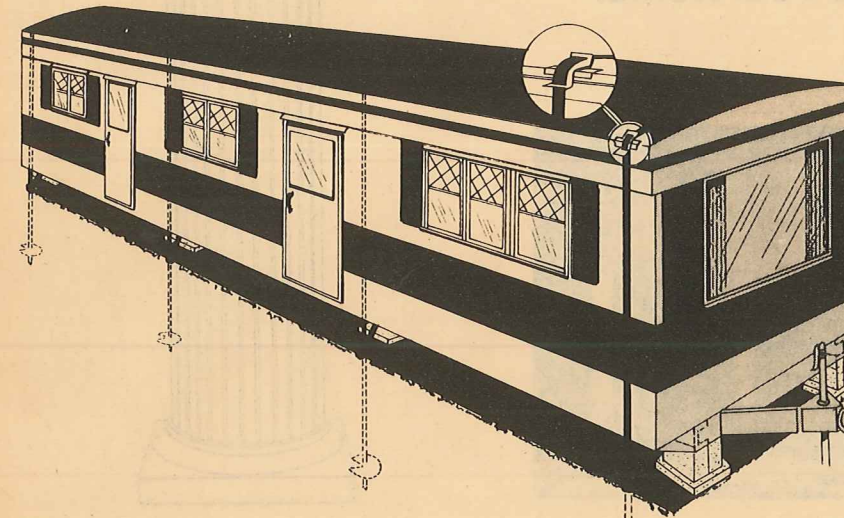
NOT STOCKED AT ALL STORES.  
Available at any store through the Winter Haven Warehouse.

# MOBILE HOME SUPPLIES

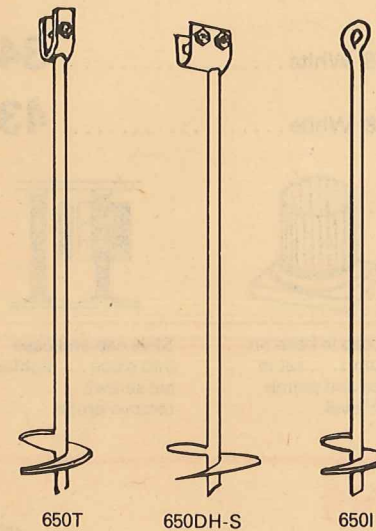


Minute Man  
ANCHORS,  
BRACKETS, STRAPS

Your Security Against  
Windstorm Damage



- Double or single tensioning heads
- 5/8" zinc-plated tensioning bolt
- 5/8" pointed shaft
- No. 8 gauge true helix disk
- Beveled edge on disc
- 24" adjustment
- Hot dipped galvanized strapping.
- Aluminum, no-slip roof bracket

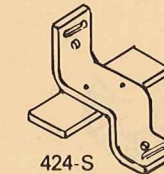


ANCHORS, STRAPS, BRACKETS  
Anchor your Mobile Home for safety during wind storms or in gusty hurricane weather.

	Scotty's Price
424S Roof Bracket	2.49
35' x 1 1/4" Straps	4.29
650T Single Head Anchor	4.28



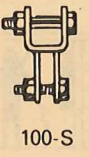
Straps



424-S



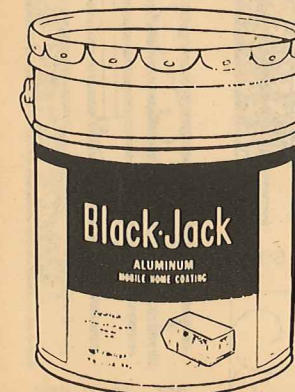
210-S



100-S

	Scotty's Price
210S Anchor	3.59
650DH-S Anchor	5.89
S Buckles for Strap	25c
650I 5/8" Eye Anchor	3.79
100-S Tension Head Adapter	3.49
330 7/16" x 30" x 3" Anchor	1.89
315 7/16" x 15" x 3" Anchor	1.67

# MOBILE HOME ROOF COATING



BLACK JACK  
ALUMINUM LIQUID ASBESTOS  
MOBILE HOME ROOF COATING

Contains 1 1/2 lbs. Alcoa-Aluminum paste per gallon. Stops leaks, seals cracks, water proofs, insulates, and reflects heat. Finishes to bright silver. For homes or trailers.

	Scotty's Price
One Gallon	4.19
5 Gallons	18.95
55 Gallons	189.95

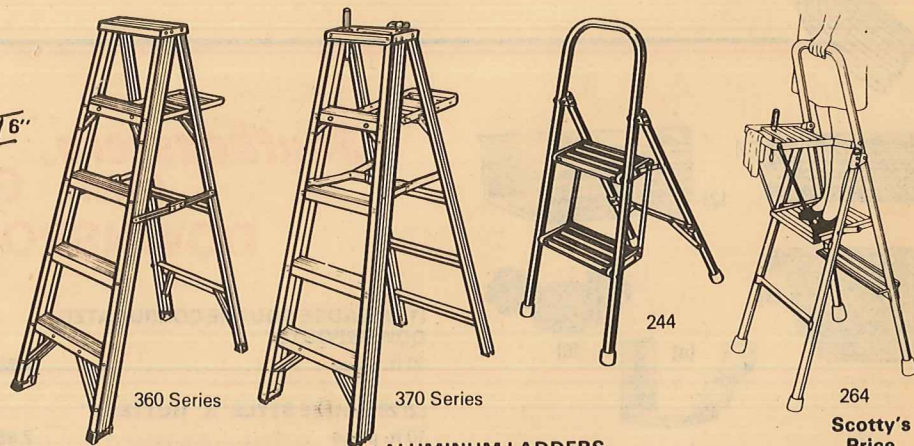
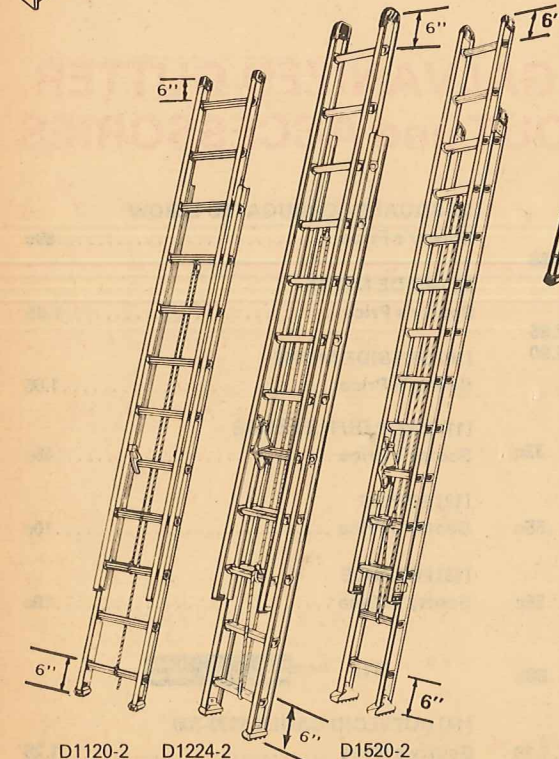


MOBILE HOME ROOF COATING  
White roof coating with fiber gives year around protection for your mobile home.

	Scotty's Price
43-17 (gallon)	7.69
43-17 (5 gallons)	36.75



# ALUMINUM LADDERS\*



ALUMINUM LADDERS	Scotty's Price
244 Utility Ladder - Household	16.99
264 4' Platform Ladder - Household	22.95
265 5' Platform Ladder - Household	25.49
366 6' Stepladder - Household	24.65
376 6' Stepladder - Commercial	33.15
378 8' Stepladder - Commercial	44.65
D1112-1 12' Single Ladder - Household	29.65
D1116-2 16' Extension Ladder - Household	35.25
D1120-2 20' Extension Ladder - Household	44.15
D1224-2 24' Extension Ladder - Commercial	69.29
INDUSTRIAL LADDERS	Scotty's Price
406 6' Step Ladder	54.85
408 8' Step Ladder	73.39
D1520-2 20' Extension Ladder	74.55
D1524-2 24' Extension Ladder	87.85

\*NOT STOCKED AT ALL STORES.  
Available at any store through the Winter Haven Warehouse.